

PART OF THE SE.1\4, OF SECTION 15, T.6N., R.3W., S.L.B. & M.  
ONE FOR THE KID SUBDIVISION

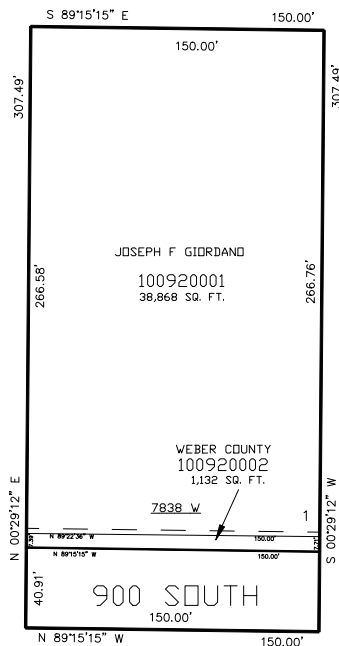
TAXING UNIT: 303

IN WEBER COUNTY  
SCALE 1" = 50'

SEE PAGE 37

SEE PAGE 37

SEE PAGE 37



SEE PAGE 43

10' UTILITY & DRAINAGE EASEMENTS EACH  
SIDE OF PROPERTY LINES AS INDICATED  
BY DASHED LINES EXCEPT AS OTHERWISE  
SHOWN.

FOR COMPLETE ENG DATA SEE  
ORIGINAL DEDICATION PLAT IN  
BOOK 54, PAGE 28 OF RECORDS.